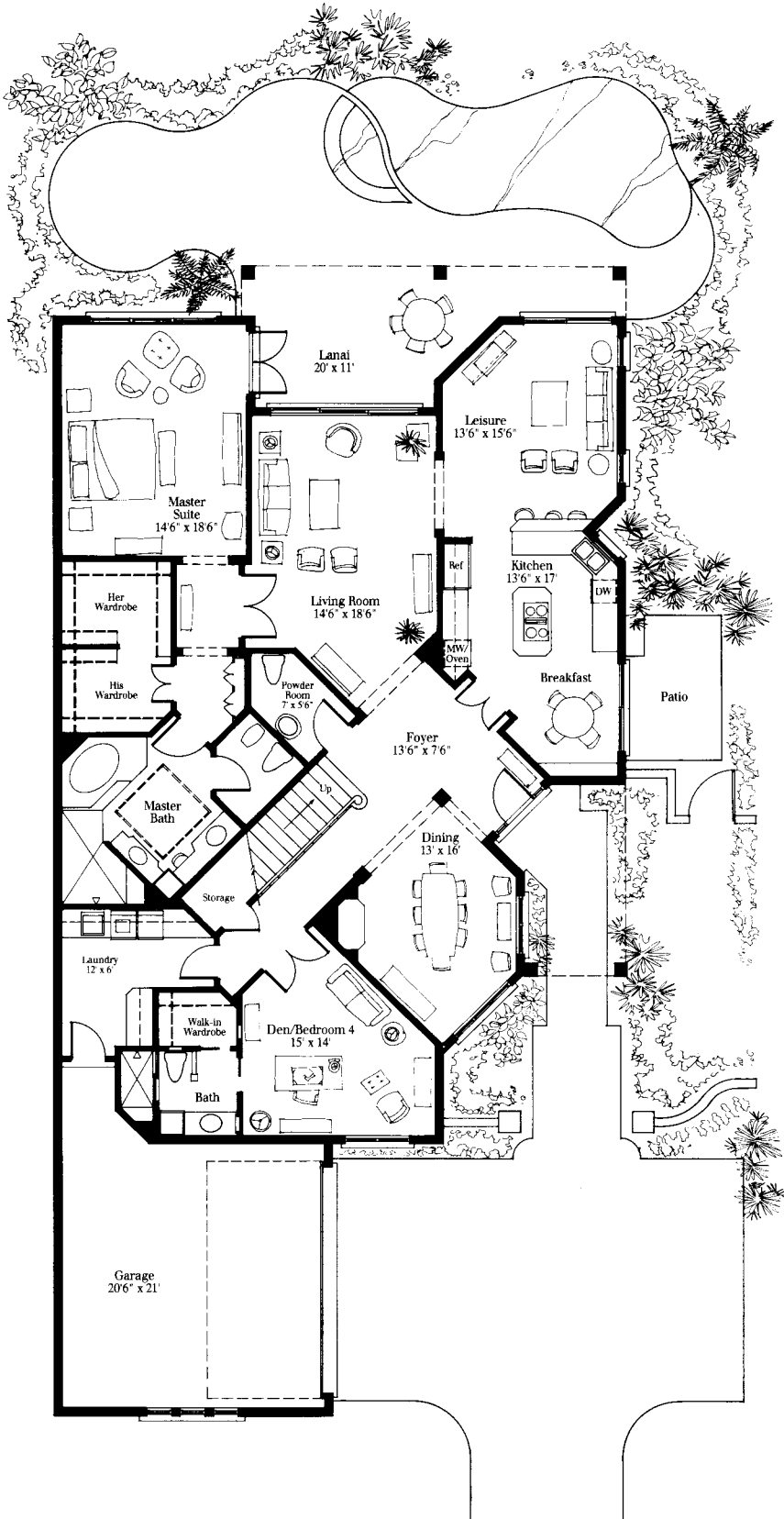


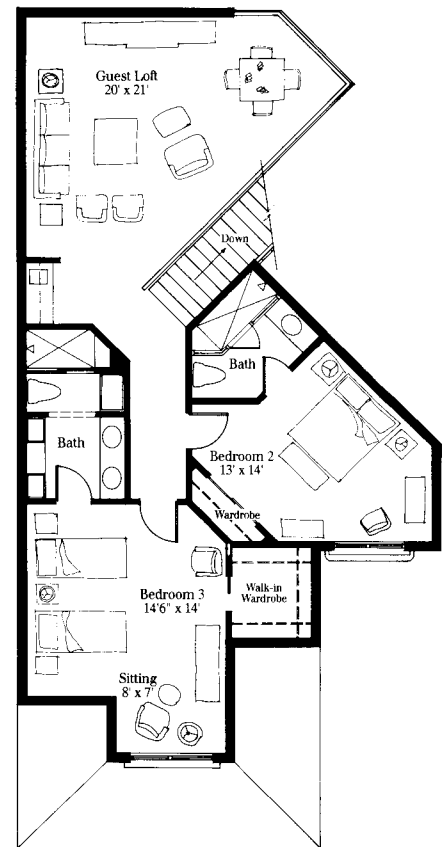
Villa La Palma



Villa Seville

Air Conditioned Living Area	2,502 Square Feet
First Floor	1,148 Square Feet
Second Floor	980 Square Feet
Total Air Conditioned	3,650 Square Feet
Entry Portico	20 Square Feet
Covered Lanai	238 Square Feet
Garage	457 Square Feet
Total Square Feet Under Roof	4,297 Square Feet
	4,365

These drawings are conceptual only and are for the convenience of reference. They should not be relied upon as representations, express or implied, of the final detail of Villa La Palma at Bay Colony. The developer reserves the right to make modifications, alterations, and changes. Dimensions and square footage are approximate and may vary with actual construction. Dimensions are measured from interior surface of interior walls. Features and specifications are subject to change without notice.



Second Floor