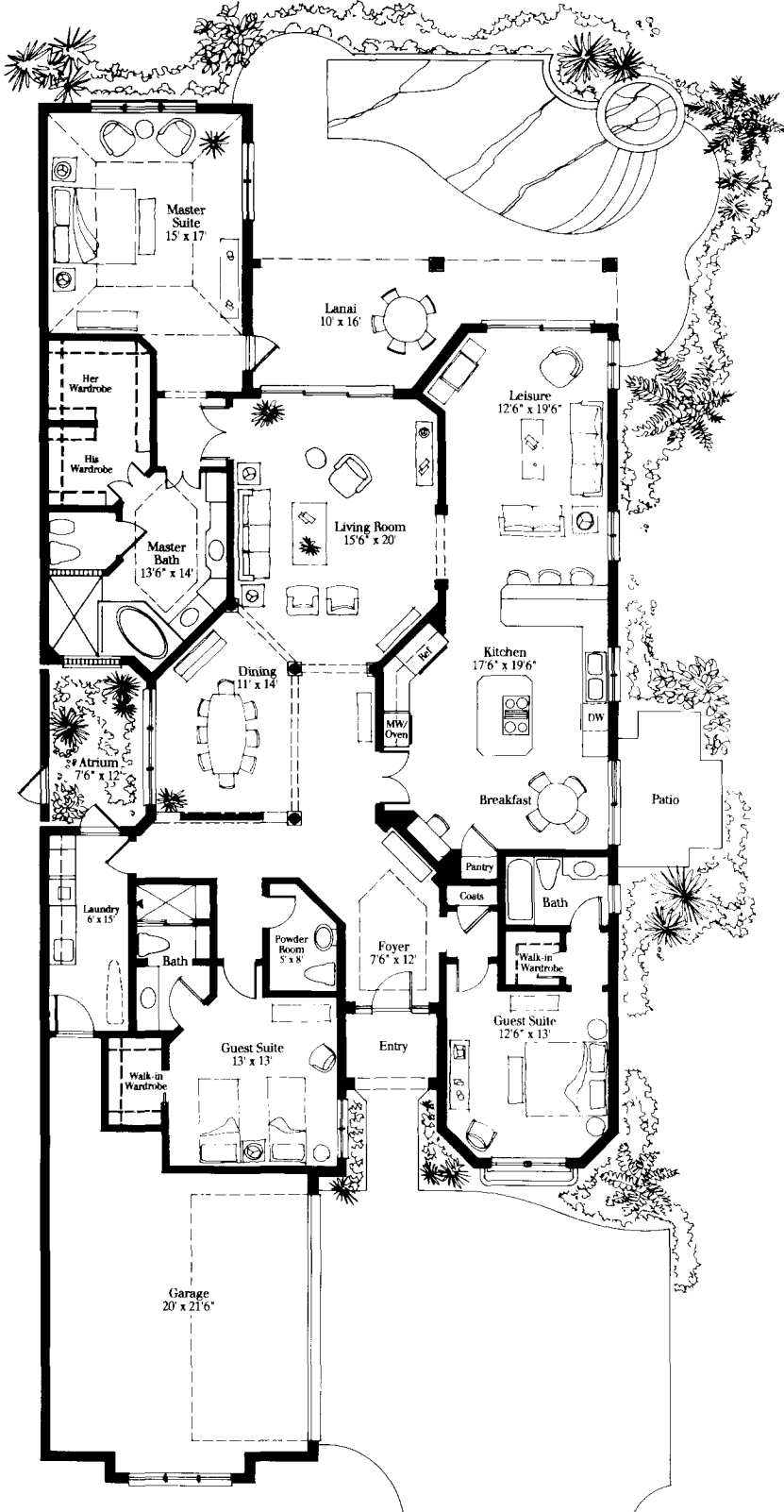


Villa La Palma



Villa Madrid

Air Conditioned Living Area	2,870 Square Feet
Entry Portico	42 Square Feet
Covered Lanai	210 Square Feet
Garage	510 Square Feet
Total Square Feet Under Roof	3,632 Square Feet
Atrium	90 Square Feet

These drawings are conceptual only and are for the convenience of reference. They should not be relied upon as representations, express or implied, of the final detail of Villa La Palma at Bay Colony. The developer reserves the right to make modifications, alterations, and changes. Dimensions and square footage are approximate and may vary with actual construction. Dimensions are measured from interior surface of interior walls. Features and specifications are subject to change without notice.