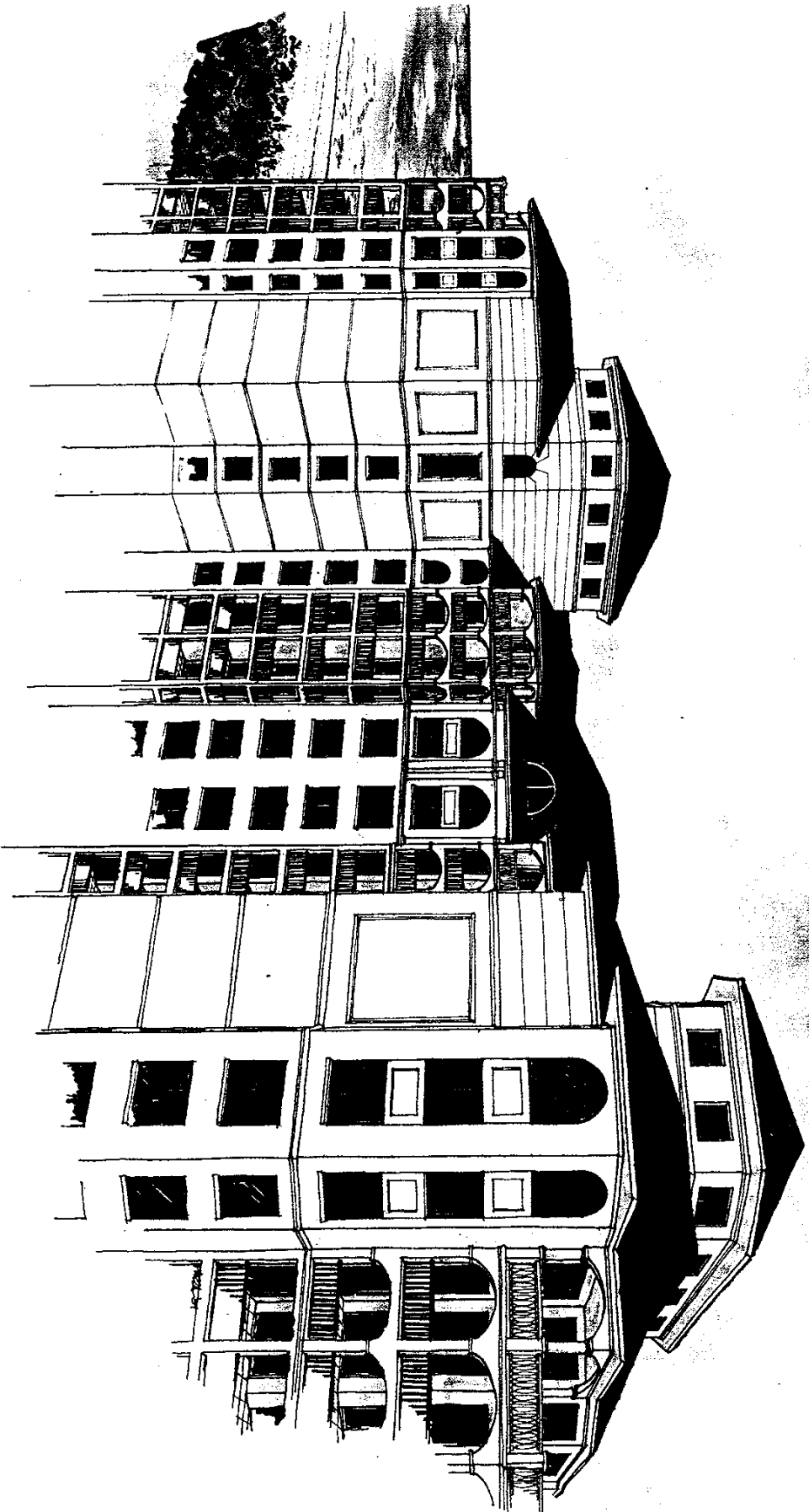


Rendering

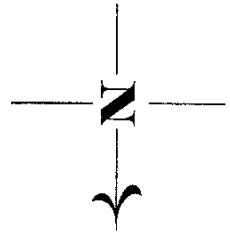
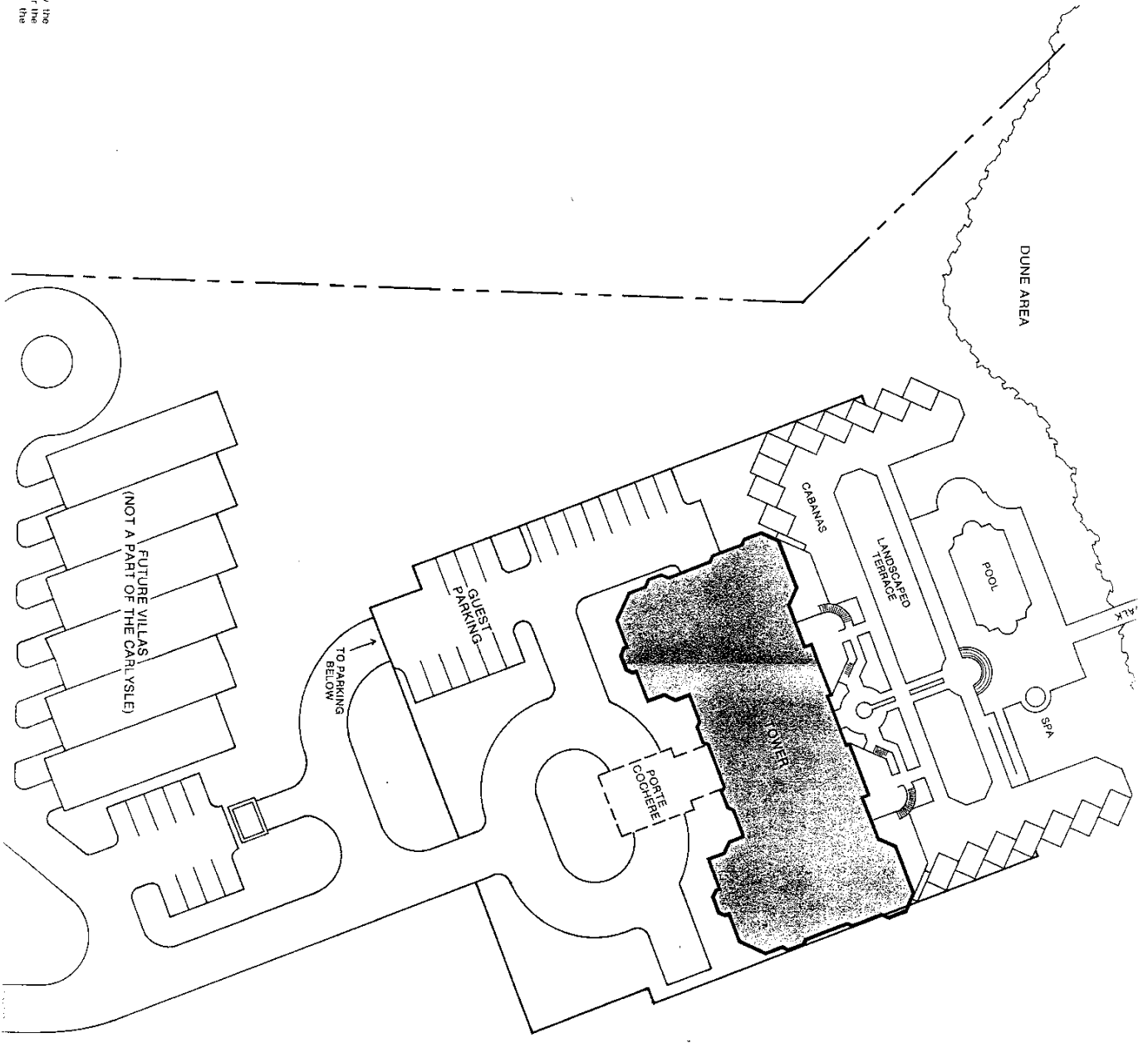


"This rendering is an artist's conceptual drawing only. It does not constitute a representation as to the exact nature of the design of this building or of the site around it."

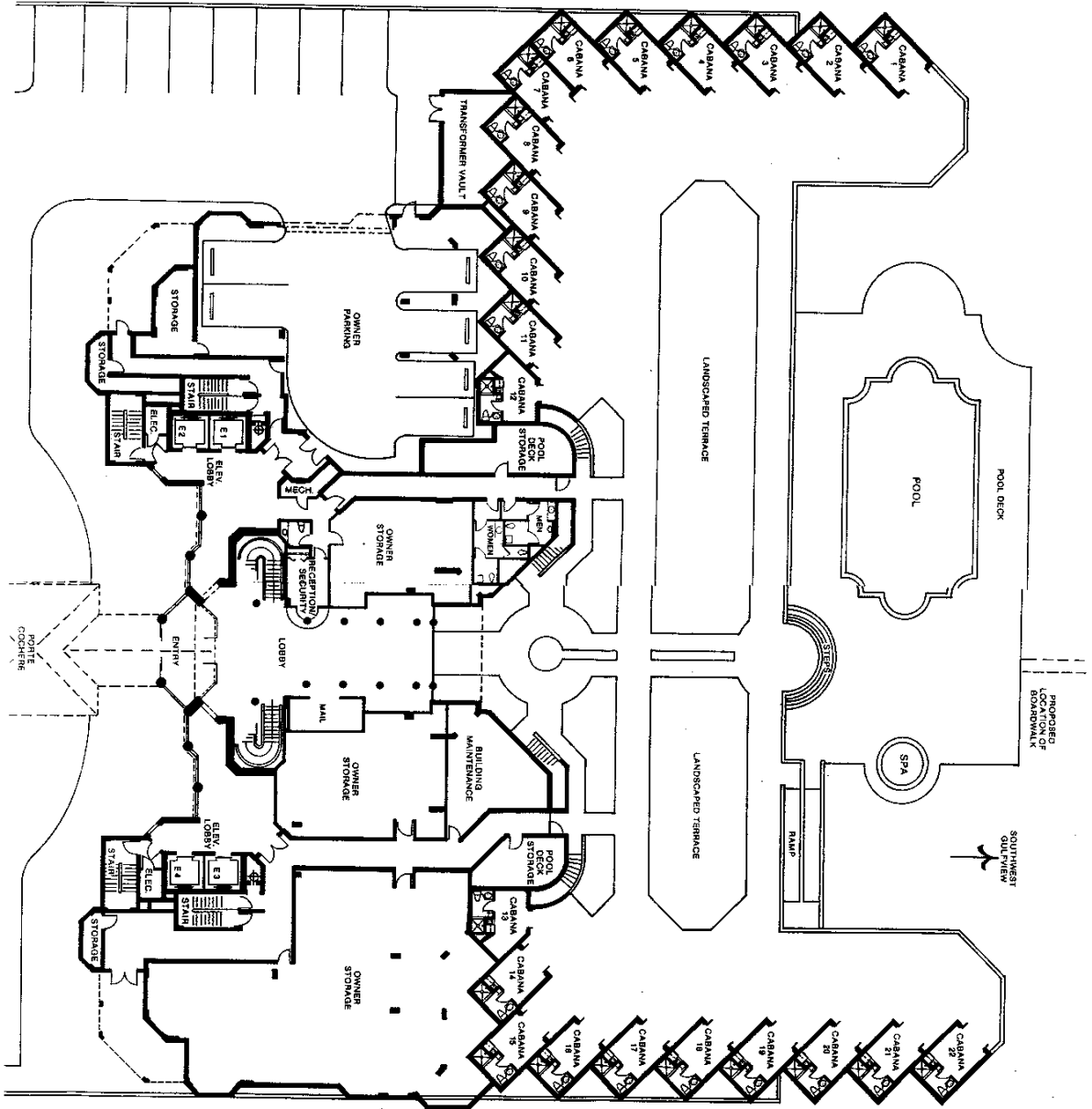
11/89

The Carlyle
at Bay Colony

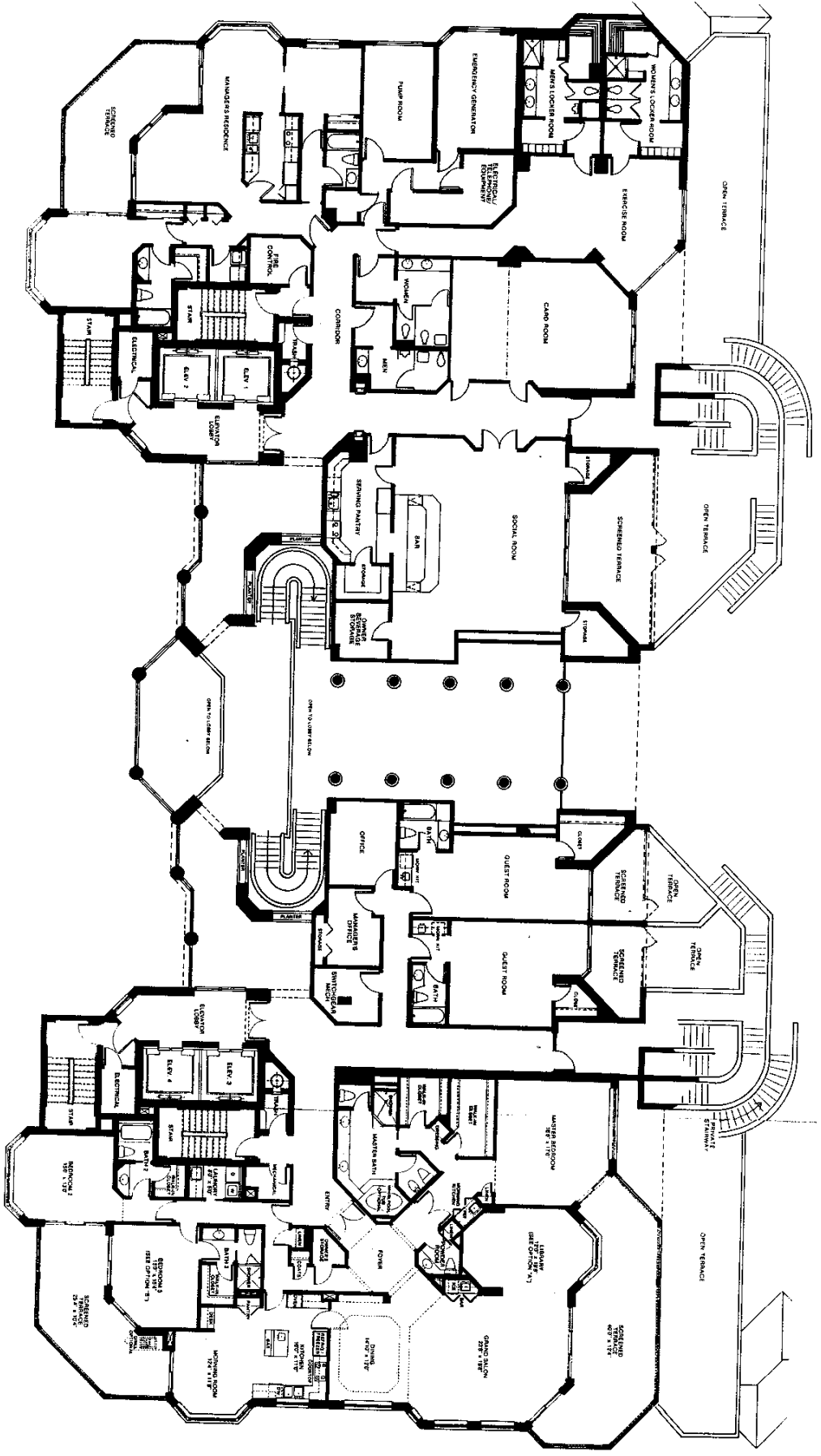
is intended to show the proposed facilities for the dominium refer to the



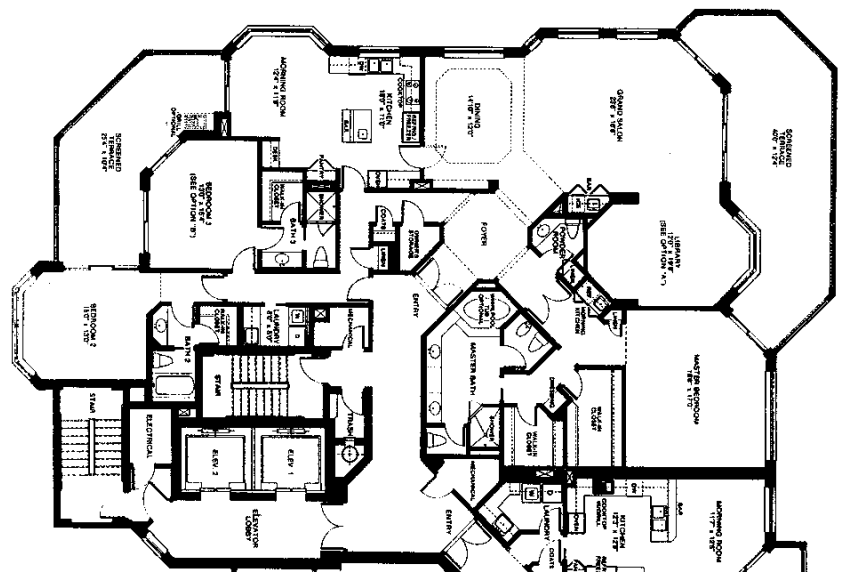
Lobby/Pool Deck



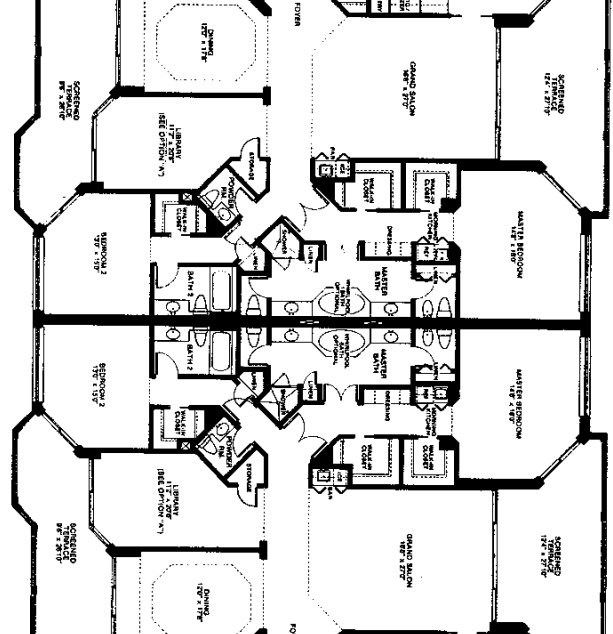
RESIDENCE PLAN A
NORTH (104)



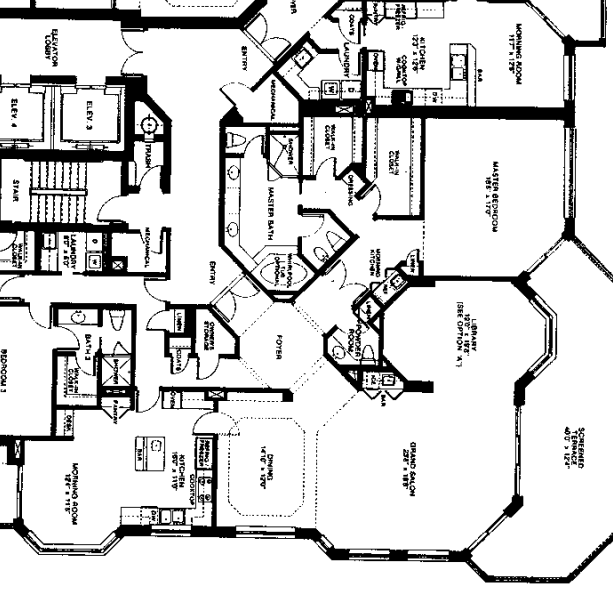
RESIDENCE PLAN A
SOUTH (01)



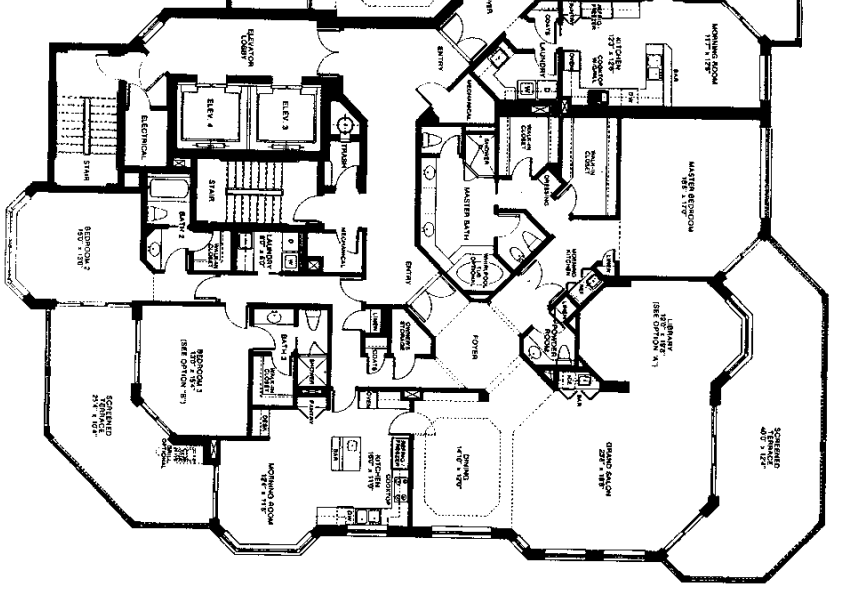
RESIDENCE PLAN B
SOUTH (02)

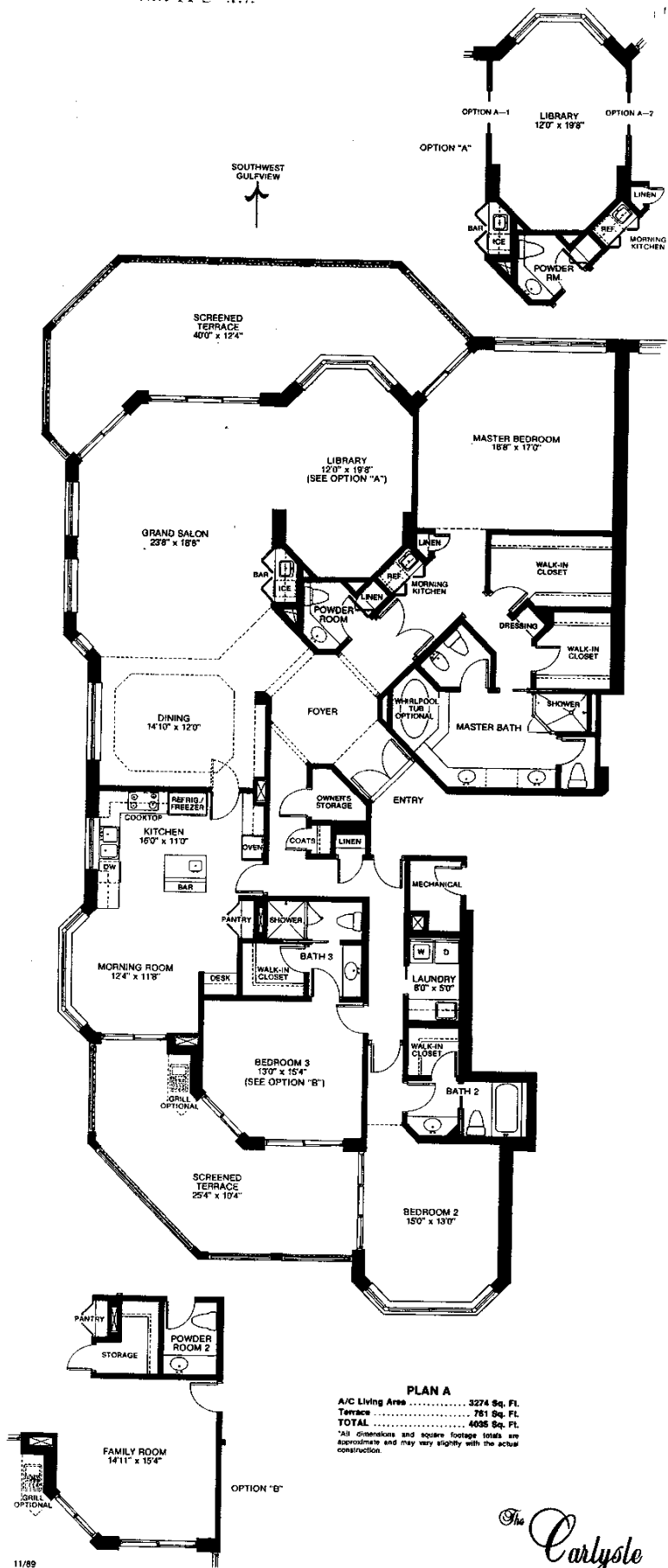


RESIDENCE PLAN B
NORTH (03)

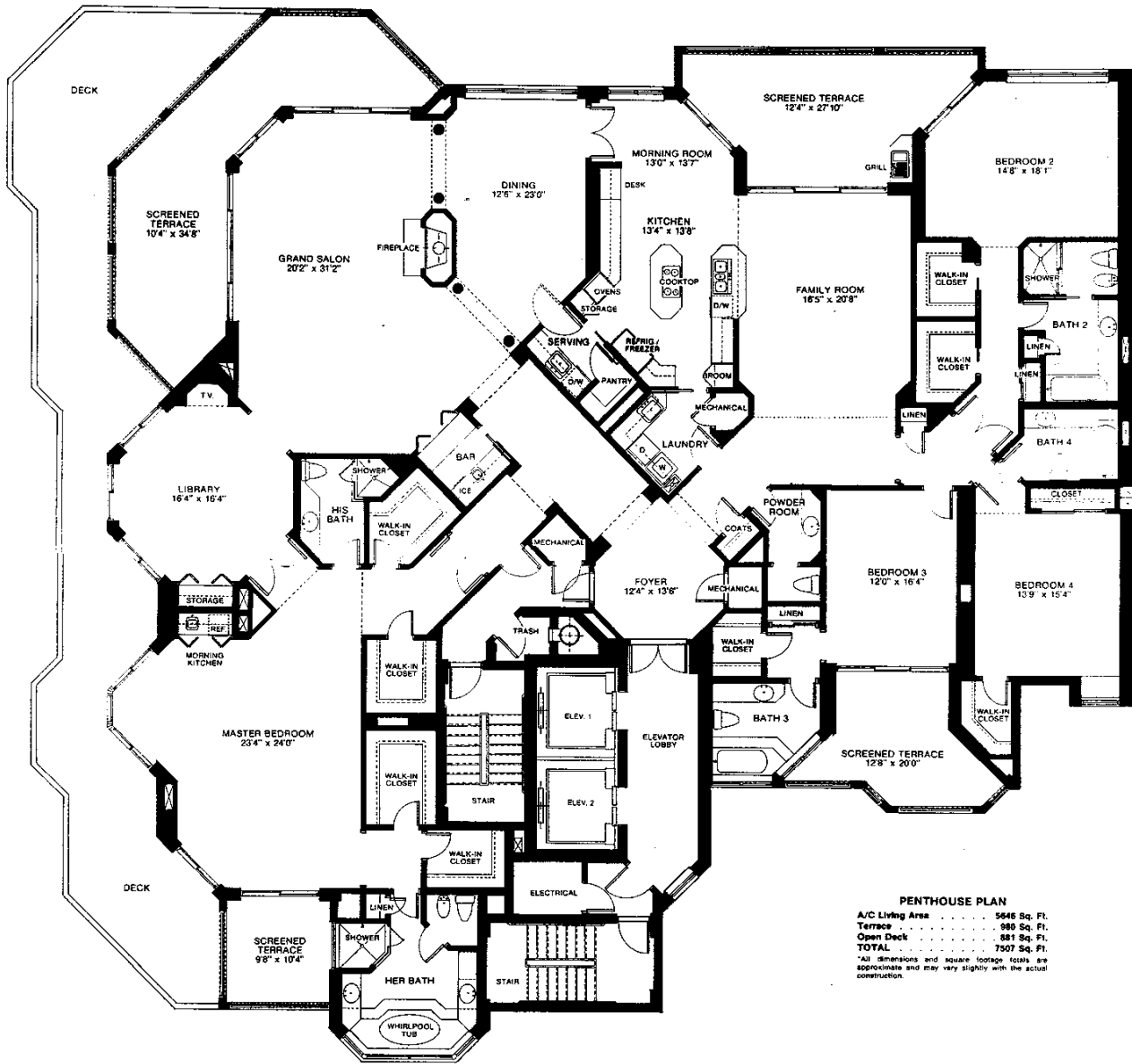


RESIDENCE PLAN A
NORTH (04)

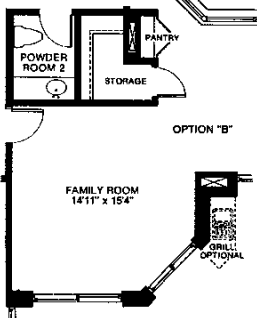
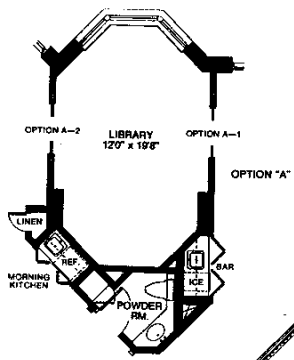
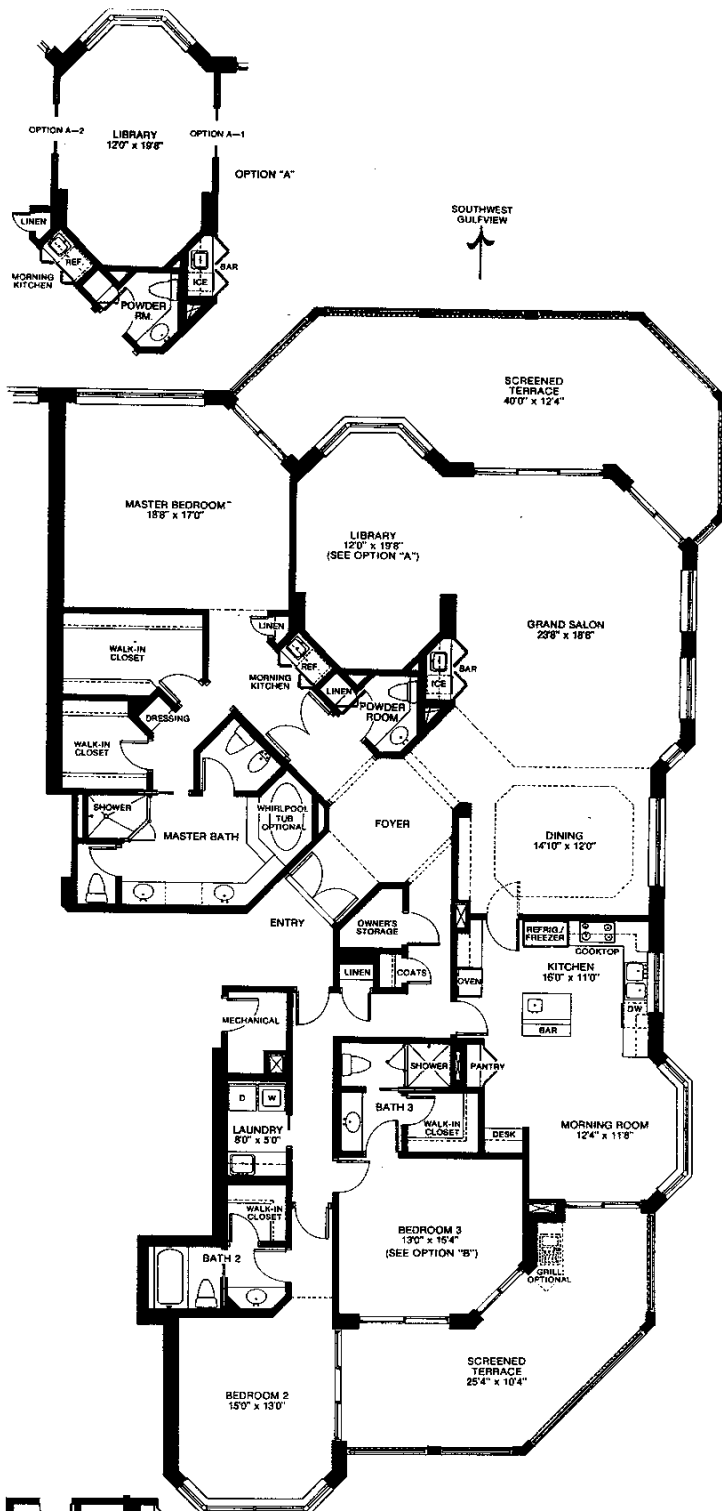




South



PENTHOUSE PLAN
 A/C Living Area 5646 Sq. Ft.
 Terrace 980 Sq. Ft.
 Open Deck 881 Sq. Ft.
 TOTAL 7507 Sq. Ft.
 *All dimensions and square footage totals are approximate and may vary slightly with the actual construction.

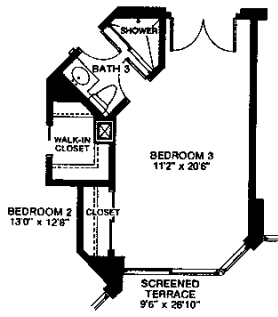
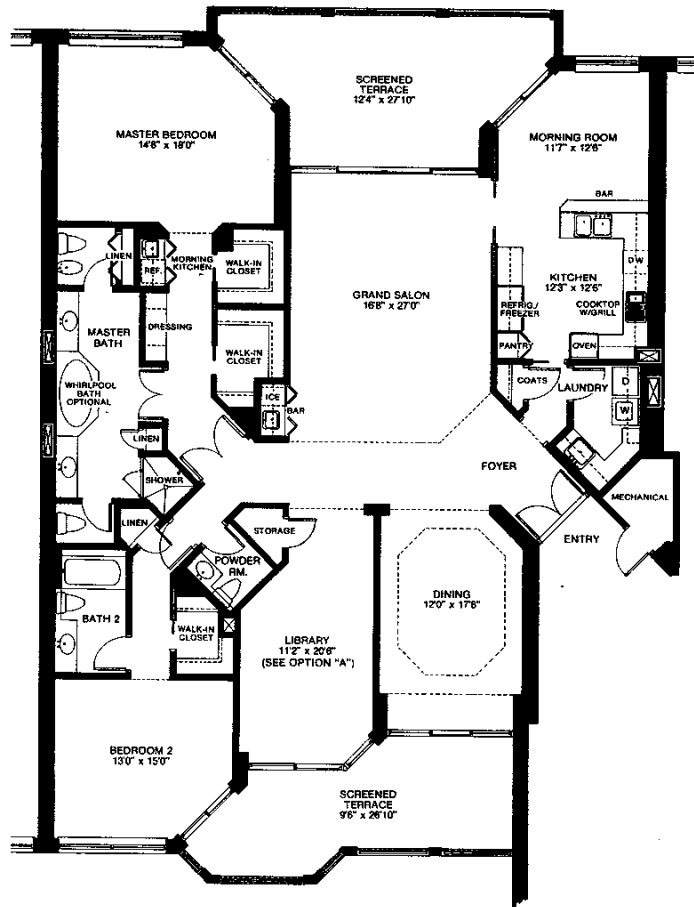


SOUTHWEST GULFVIEW

PLAN A
 A/C Living Area 3274 Sq. Ft.
 Terrace 781 Sq. Ft.
TOTAL 4035 Sq. Ft.
 *All dimensions and square footage totals are approximate and may vary slightly with the actual construction.

The Carlisle
 at New Orleans

SOUTHWEST
GULFVIEW



OPTION "A"

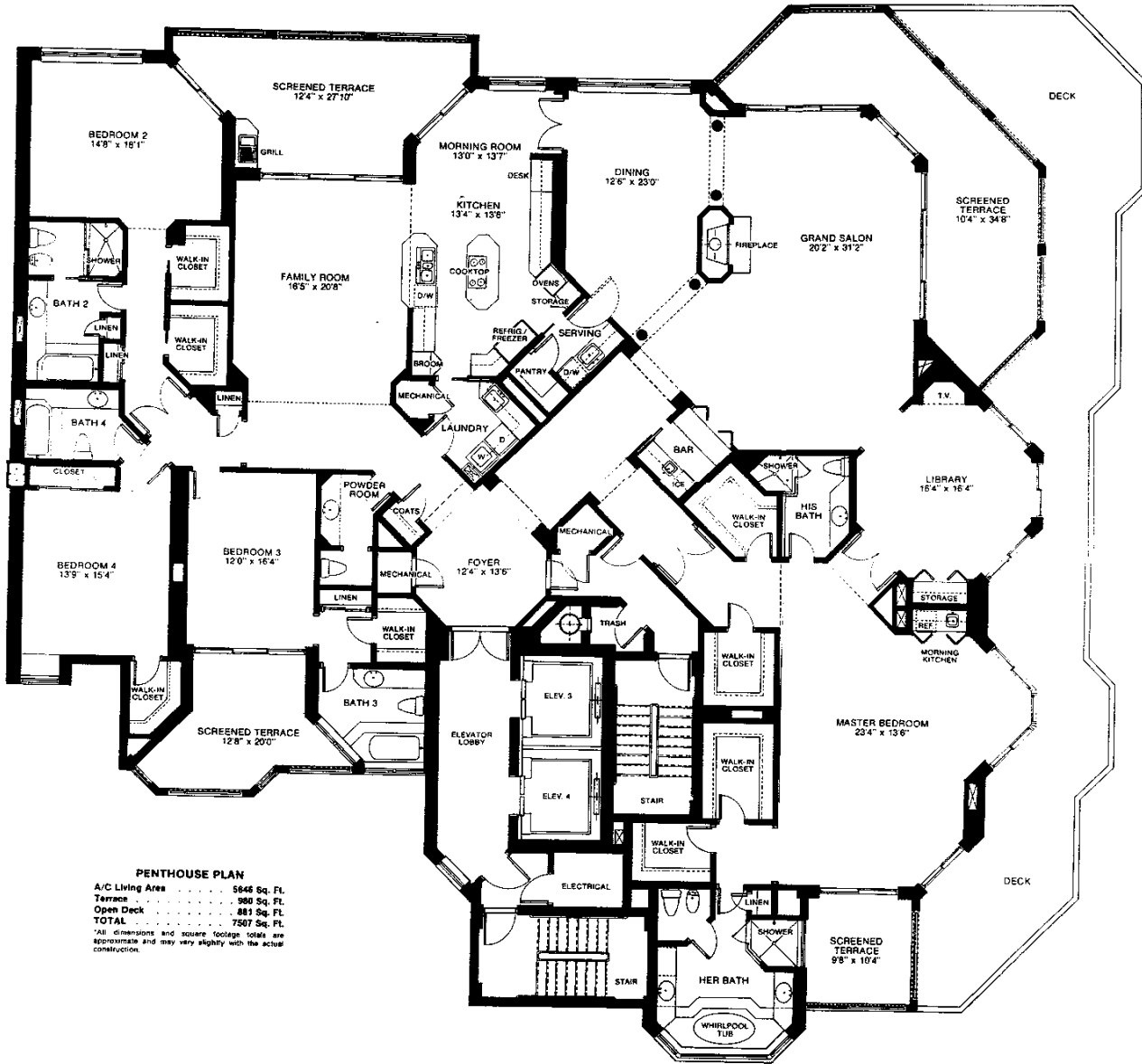
PLAN B

A/C Living Area	2604 Sq. Ft.
Terrace	515 Sq. Ft.
TOTAL	3119 Sq. Ft.

*All dimensions and square footage totals are approximate and may vary slightly with the actual construction.

The **Carlyle**
at Sea Colony

SOUTHWEST GULFVIEW



PENTHOUSE PLAN
 A/C Living Area 5646 Sq. Ft.
 Terrace 980 Sq. Ft.
 Open Deck 881 Sq. Ft.
TOTAL 7507 Sq. Ft.
 *All dimensions and square footage totals are approximate and may vary slightly with the actual construction.