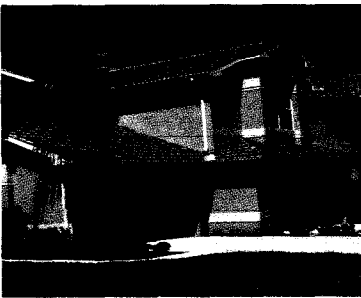
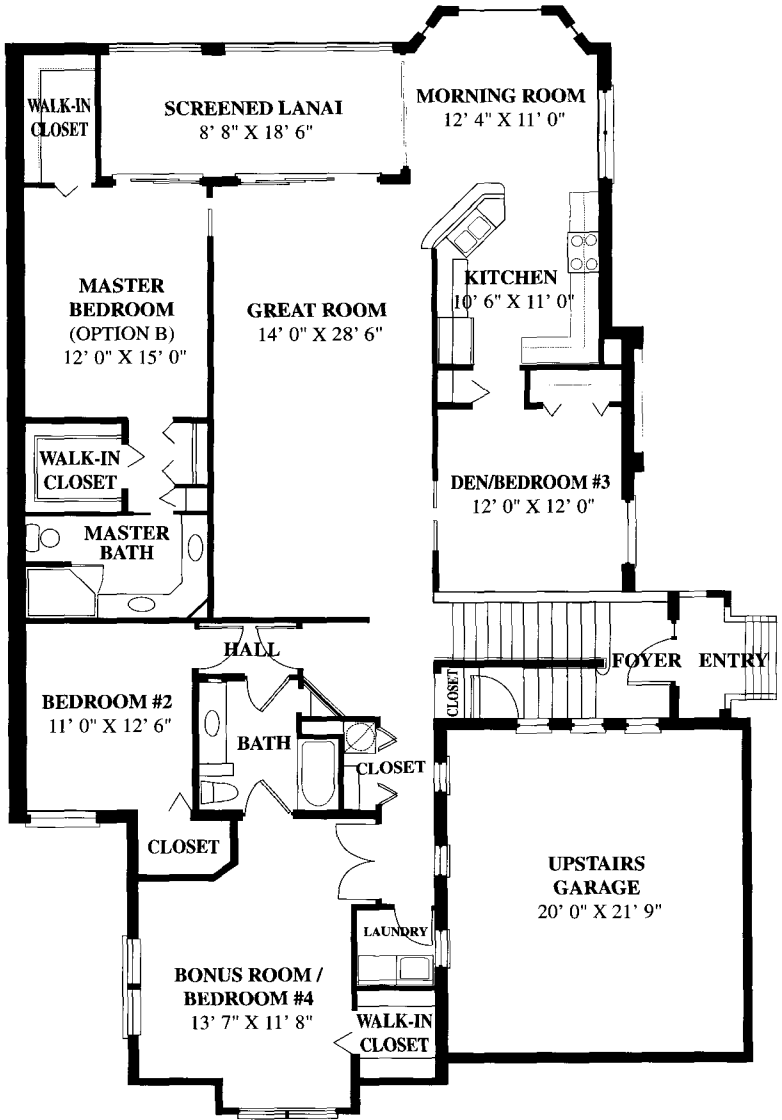


The Stratford II



The Stratford II model in The Pinnacle neighborhood at The Strand is a 3-bedroom coach home with a bonus room which can be utilized as a fourth bedroom, office, media room or playroom. It has 2,150 square feet of air-conditioned living area plus the lanai and 2-car attached garage for a total of 2,786 square feet. All of the homes at The Pinnacle feature private guest suites,

a master suite with separate access to the lanai, brick paver driveways and walkways, and tile roofs. A neighborhood clubhouse with swimming pool is available exclusively to The Pinnacle residents.

A/C Living Area	2,150 Sq. Ft.
Lanai	198 Sq. Ft.
Garage	438 Sq. Ft.
TOTAL	2,786 Sq. Ft.