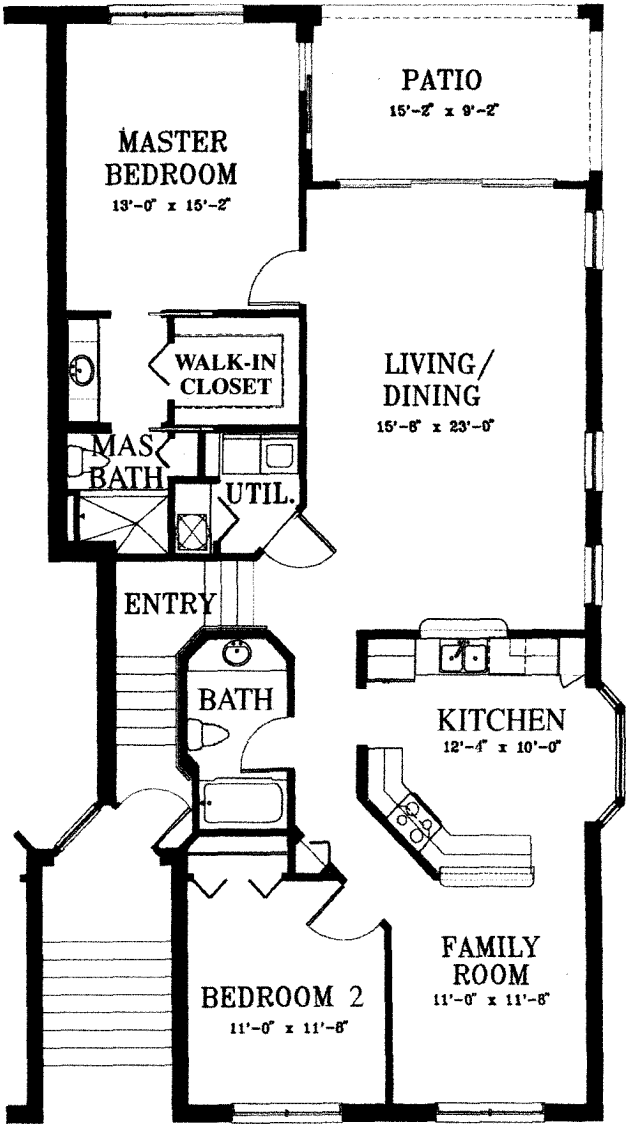




Jack Parker Homes

The Augusta II



The Augusta II model in the Wedge Wood neighborhood at The Strand is a 2-bedroom home with family room and 2 baths. The Augusta II features a

bay window in the morning room and cathedral ceilings. There are four models from which to choose in the Wedge Wood neighborhood. All of the homes in this neighborhood have a single-car detached garage, master suite with private access to the lanai, walk-in closets and a garden promenade between the residence and the garage. A neighborhood clubhouse with swimming pool is available exclusively to Wedge Wood residents.

A/C Living Area	1,478 Sq. Ft.
Lanai	154 Sq. Ft.
Garage	272 Sq. Ft.
TOTAL	1,904 Sq. Ft.